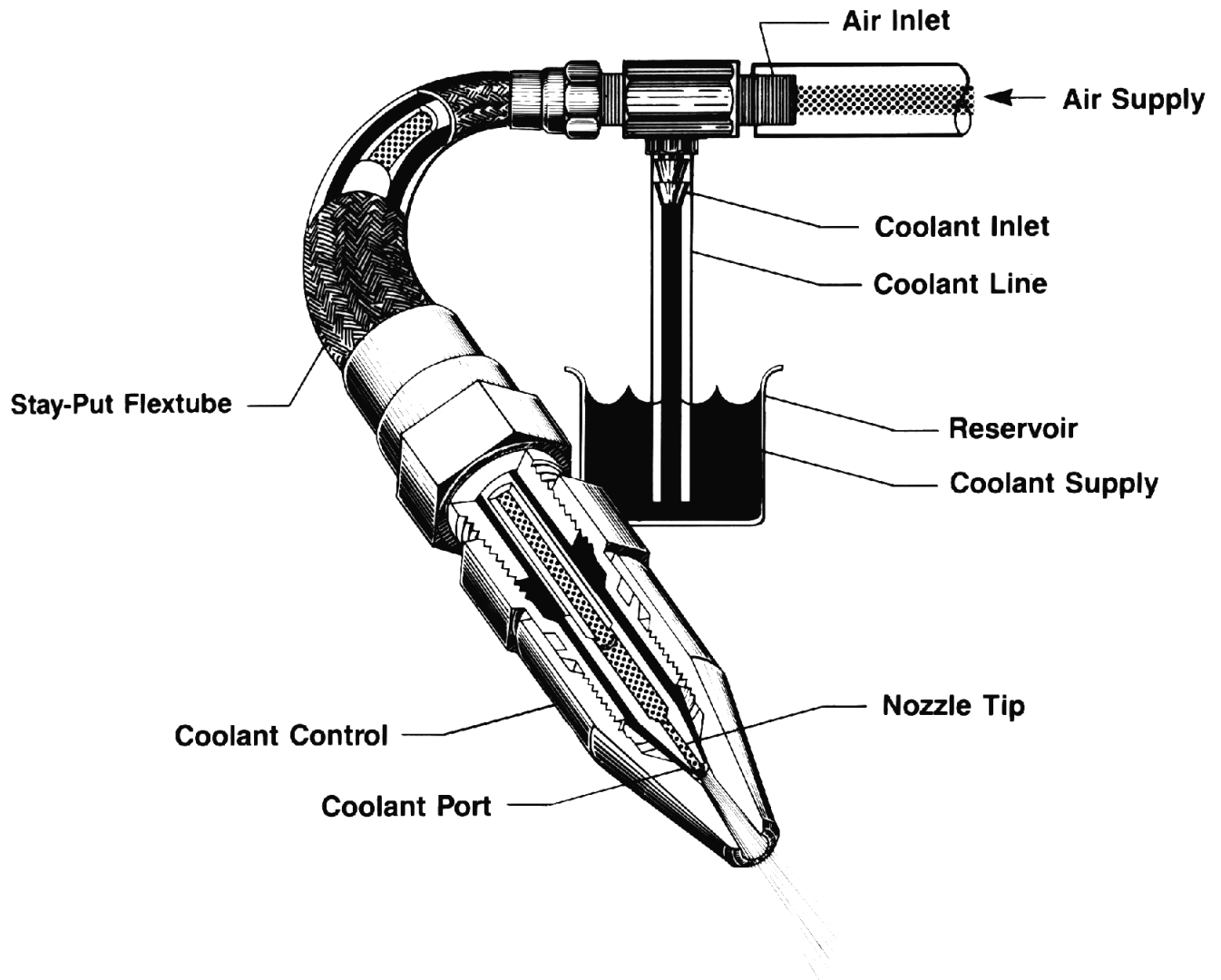


INSTALLATION, OPERATION, and TROUBLESHOOTING INSTRUCTIONS with REPLACEMENT PARTS LISTINGS for the BasicMist Models M-010, M-012 & M-013



INSTALLATION INSTRUCTIONS

A. Mount the Mist Unit.

1. Mount the BasicMist by screwing it into a 1/8" NPT **Air Supply** outlet. This outlet must be rigid enough to act as the mounting for the BasicMist.

B. Connect the Coolant Line.

1. Connect the **Coolant Line**, supplied with the BasicMist, to the barbed fitting noted **Coolant Inlet**. Have the other end of this **Coolant Line** connected to, or placed into the **Reservoir** containing the Coolant.

OPERATING INSTRUCTIONS

The BasicMists all operate by the same principle.

When air is supplied by the **Air Supply**, this air passes through the BasicMist and exits at the **Nozzle Tip**. This air stream forms a venturi at the **Coolant Port** which places a suction on the **Coolant Supply**. The Coolant is drawn from its **Reservoir**, through the BasicMist, and to the **Coolant Port** where it is atomized by the air stream to form the spray.

When the **Air Supply** is shut down the spraying will stop. Rotating the knurled nozzle noted the **Coolant Control** will change the opening at the **Coolant Port** and regulate the amount of Coolant usage.

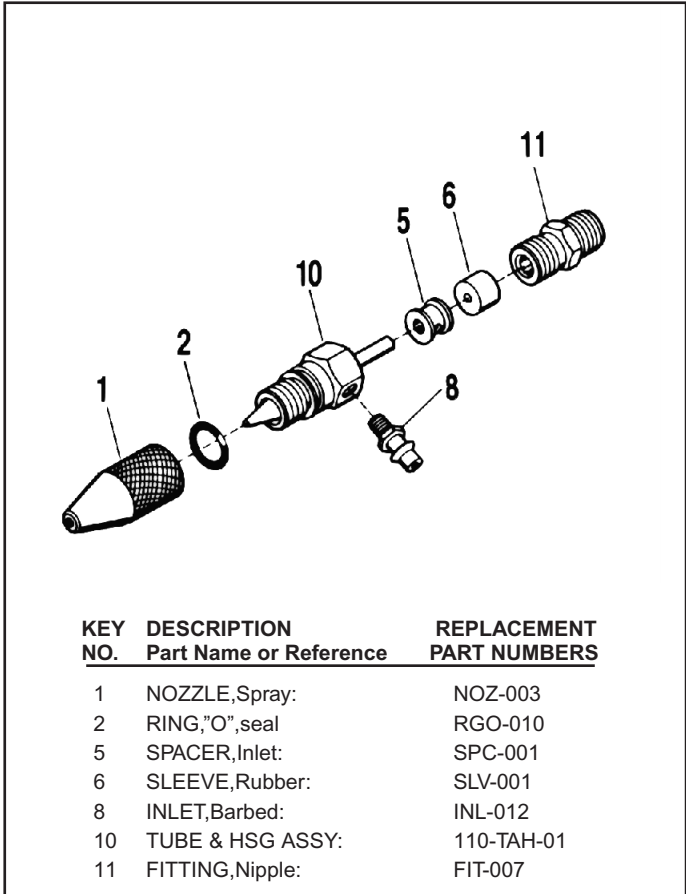
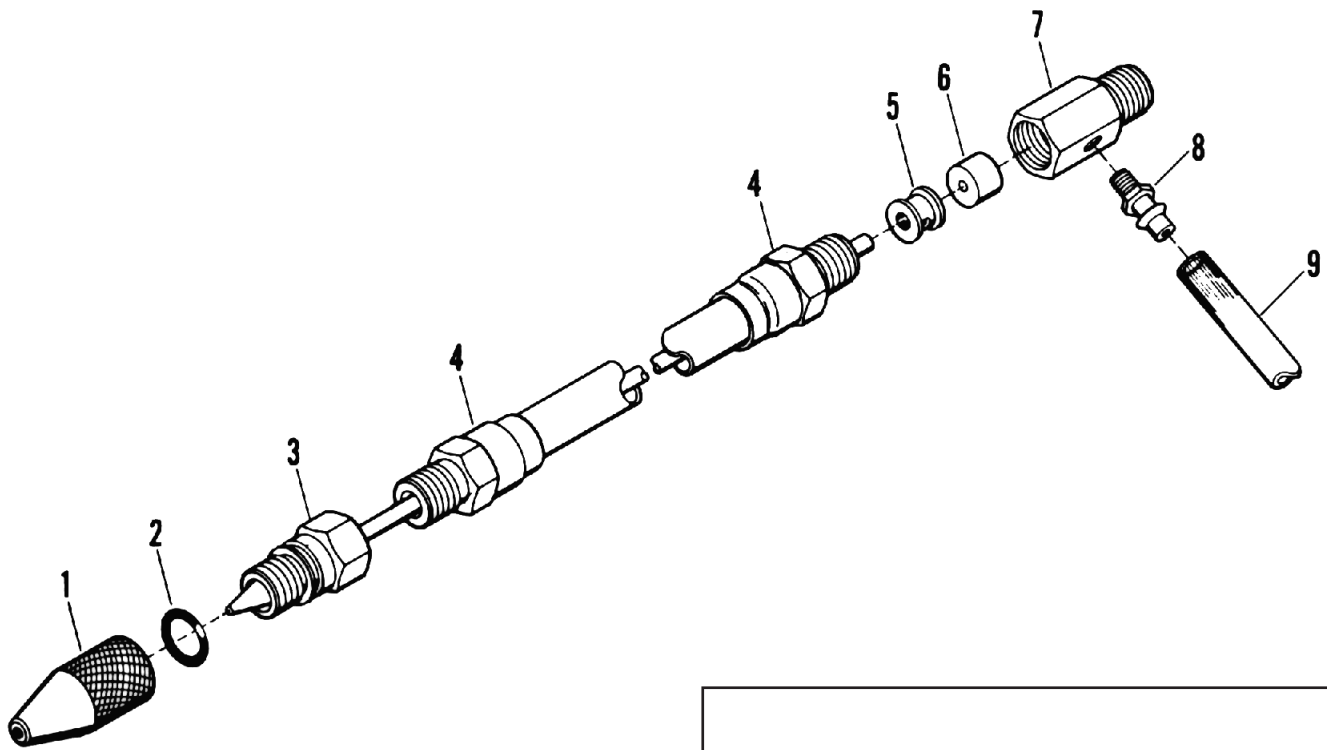
TROUBLESHOOTING INSTRUCTIONS

PROBLEM	SOLUTION
<p>I. Coolant drips from the Nozzle when the Unit is turned off.</p>	<p>A. Coolant may be syphoning from the Reservoir.</p> <ol style="list-style-type: none"> 1. Locate the Reservoir so that it's top is lower than the Nozzle Tip on the Unit.
<p>II. The Spray flutters or comes out in intermittent bursts.</p>	<p>A. Air may be being drawn or forced into the Coolant.</p> <ol style="list-style-type: none"> 1. Check for low Coolant level in the Reservoir. 2. Check all lines carrying Coolant for cracks, punctures, etc. Check that all line connections are tight and secure. 3. Remove NOZZLE (#1 on Parts List) by unscrewing it completely off. Check "O" RING (#2 on the Parts List), replace if bad. Check inside NOZZLE for deformation or contamination, clean or replace if necessary. 4. Check that the FlexTube is tightly torqued onto ADAPTER (#7 on Parts List). See PROBLEM V. for details on how tight. 5. Check the SLEEVE (#6 on Parts List). Replace if cut or badly deformed. See PROBLEM V. for instruction on disassembly.
<p>III. Air not being emitted from the Nozzle</p>	<p>A. Air may not be getting to the Unit.</p> <ol style="list-style-type: none"> 1. Make sure the Air Supply to the Unit is turned on. 2. Disconnect the Unit from the Air Supply outlet and see if air flows freely from this outlet when the Air Supply is turned on. <p>B. An air passage in the Unit may be obstructed.</p> <ol style="list-style-type: none"> 1. See PROBLEM V. for instruction.
<p>IV. Only air emitted, no Coolant being sprayed when Unit is on.</p>	<p>A. Coolant may not be getting to the Unit.</p> <ol style="list-style-type: none"> 1. Make sure the Coolant Control is not "closed". This control can be used to shut off the Coolant Supply. 2. Check for low Coolant level in Reservoir. 3. Disconnect the Coolant Line at the Coolant Inlet on the Mist Unit. When the Mist Unit is "on", there should be a slight suction felt at the barbed Coolant Inlet. <ol style="list-style-type: none"> a. If no suction is seen, a Coolant passage in the Unit is probably obstructed. See step C below. b. If there is suction, there is probably an obstruction in the Coolant Line or at the Reservoir. <p>B. Air may be being drawn or forced into the Coolant.</p> <ol style="list-style-type: none"> 1. See the SOLUTIONS at PROBLEM II. <p>C. A Coolant passage may be obstructed.</p> <ol style="list-style-type: none"> 1. Open the Coolant Control at least 2 turns. 2. Momentarily place thumb or finger over the end of the Nozzle and release. If this solves the problem, the contamination has been dislodged. If this does not solve the problem or it re-occurs again quickly, see PROBLEM V. for instructions on cleaning the Unit.

Continued

TROUBLESHOOTING INSTRUCTIONS

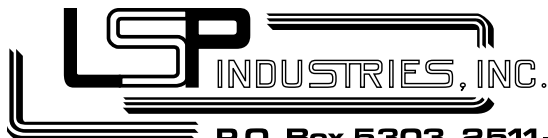
PROBLEM	SOLUTION
<p>V. All or part of the Unit must be taken apart to check out a problem above.</p> <p>Carefully follow the instructions given at the right to insure proper disassembly and assembly. Improper handling may cause damage to the Unit</p>	<p>A. FlexTube Assembly (#1 to #6 on Part List)</p> <ol style="list-style-type: none"> 1. Removing the FlexTube. <ol style="list-style-type: none"> a. Unscrew the FlexTube from the ADAPTER (#7 on Parts List). DO NOT unscrew any fitting on the FlexTube until it has first been taken off the ADAPTER or irreparable damage can be caused. b. After removing the FlexTube, check for SPACER (#5 on Parts List) and SLEEVE (#6 on Parts List). These items may be lodged in the ADAPTER. 2. Checking FlexTube for Blockage. <ol style="list-style-type: none"> a. Blow into the copper tube sticking out the end of the FlexTube. If air passes through, it indicates the air passage is clear. b. Block the end of the copper tube with thumb. Blow into the Nozzle. If air passes through, it indicates the Coolant passage is clear. c. If either passage is blocked, back flushing with a high-pressure stream of air into the Nozzle should dislodge any contamination. 3. Checking FlexTube for Damage. <ol style="list-style-type: none"> a. Unscrew the TUBE & HSG ASSY (#3 on Parts List) from the TUBE (#4 on Parts List). <ol style="list-style-type: none"> C Check the copper tube to see if it is tightly joined to the square insert. Check around the square insert for lodged contamination. Check that the point on the square insert is not deformed. Clean or replace TUBE & HSG ASSY as necessary. b. c. d. 4. Installing the FlexTube. <ol style="list-style-type: none"> a. Assemble in reverse of disassembly. Make sure there is no SPACER or SLEEVE lodged in the ADAPTER before inserting the FlexTube. b. Screw FlexTube into the ADAPTER until hand tight. Then continue torquing for 1-1/2 to 2 more turns. The FlexTube must be torqued down enough into the ADAPTER that the SLEEVE seals the joint.



PARTS LISTING

KEY DESCRIPTION NO. Part Name or Reference	REPLACEMENT PART NUMBERS	
	Models with 9" FlexTubes	Models with 12" FlexTubes
Parts Below are Common to all Models (Listed at the Right)		
	M-012	M-013
FlexTube:		
1 NOZZLE,Spray:	NOZ-003	NOZ-003
2 RING "O",seal:	RGO-010	RGO-010
3 TUBE & HSG ASSY:	111-TAH-02	111-TAH-03
4 TUBE,Flex:	TUB-022	TUB-023
5 SPACER,Inlet:	SPC-001	SPC-001
6 SLEEVE,Rubber:	SLV-001	SLV-001
NOTE: Items above under "FlexTube" may be ordered assembled complete under Part No's at the right		
	111-TUB-02	111-TUB-03
7 ADAPTER,Inlet:	ADP-001	APD-001
8 INLET,Barbed:	INL-012	INL-012
9 TUBE,Plastic:	TUB-154	TUB-154

KEY NO.	DESCRIPTION Part Name or Reference	REPLACEMENT PART NUMBERS
1	NOZZLE,Spray:	NOZ-003
2	RING,"O",seal	RGO-010
5	SPACER,Inlet:	SPC-001
6	SLEEVE,Rubber:	SLV-001
8	INLET,Barbed:	INL-012
10	TUBE & HSG ASSY:	110-TAH-01
11	FITTING,Nipple:	FIT-007



P.O. Box 5303, 2511-20th St.
Rockford, Illinois 61125
815/226-8090 Fax: 815/226-9250
E-Mail: lsp@lspind.com